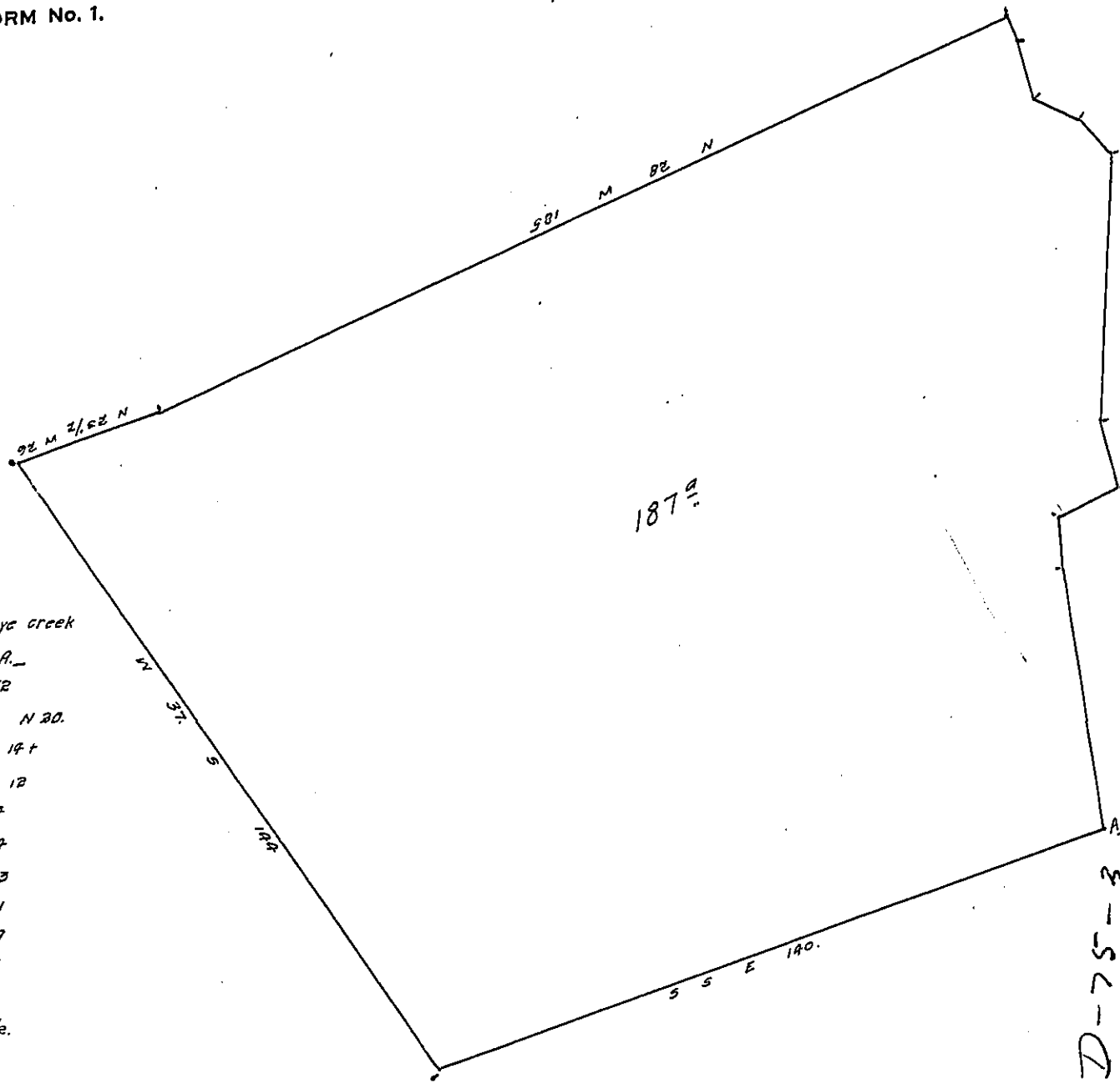


FORM No. 1.



the course of ye creek
beginning at A.
E. b. N 52
E 11 30° N 20.
+ 14 S E 6 E 14 +
E b. N 12
E. 24
E 30° N 14
E - - 13
N: E - 11
N b. E 9
N. E. 6
N b. E 8
N E. 4 1/2.

A draught of Capt Fineys land from Tizah bounded one ye line N 28 W with
Capt Fineys land from Gover^r Penn and one ye line W 37 S with ye same and one
ye line S. S. E. with his land from Lloyd with ye courses of Tacony Creek begin-
ning at A. Survey'd by Tho. Fairman and ~~1772~~
17th 2d mo. 1702.

David Powell

IN TESTIMONY that the above is a copy of the original remaining on file in
the Department of Internal Affairs of Pennsylvania, made
conformably to an Act of Assembly approved the 16th day of
February, 1833, I have hereunto set my Hand and caused
the Seal of said Department to be affixed at Harrisburg,
this twenty-second day of June 1909.

Henry Horvath
Secretary of Internal Affairs.